

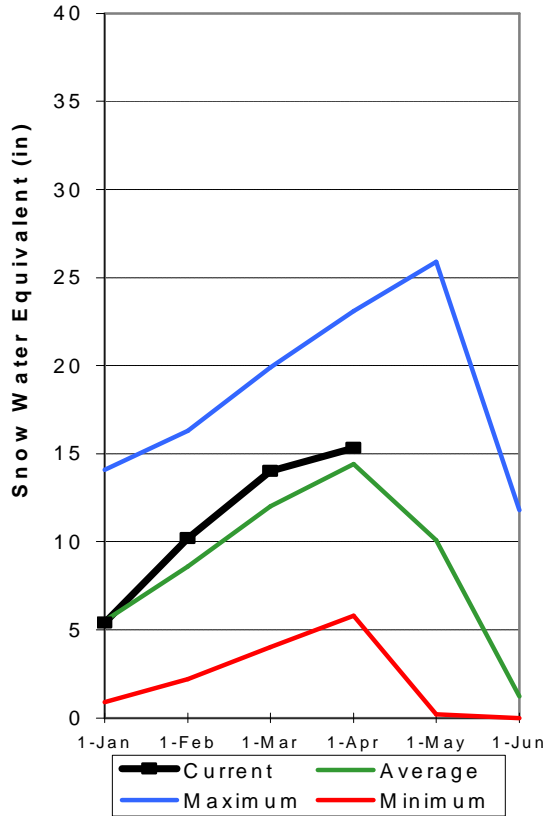
# Carbon, Emery, Wayne, Grand and San Juan Co.

April 1, 2008

Snowpacks in this region are near normal at 106% of average, about 293% of last year. Individual sites range from 69% to 185% of average. Precipitation during March was much below above average at 52%, bringing the seasonal accumulation (Oct-Mar) to 106% of normal. Soil moisture estimates in runoff producing areas are at 54% of saturation in the upper 2 feet of soil compared to 73% last year and up 10% from last month. Forecast streamflows range from 96% to 164% of average. Reservoir storage is at 44% of capacity, down 25% from last year at this time. Surface Water Supply Indices for the area are: Price 35%, San Rafael area 62% and Moab 48%. General runoff and water supply conditions are below average on the Price due to reservoir fill restriction, and near to above average elsewhere.

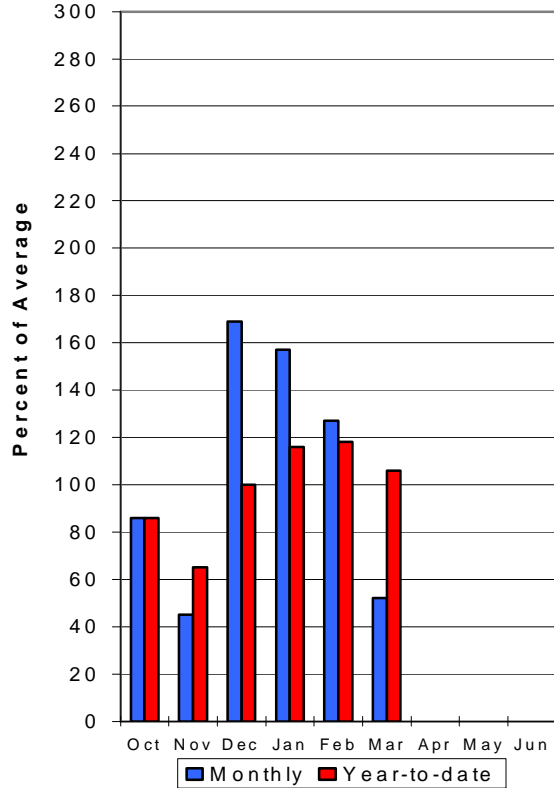
## Southeast Utah Snowpack

4/1/2008



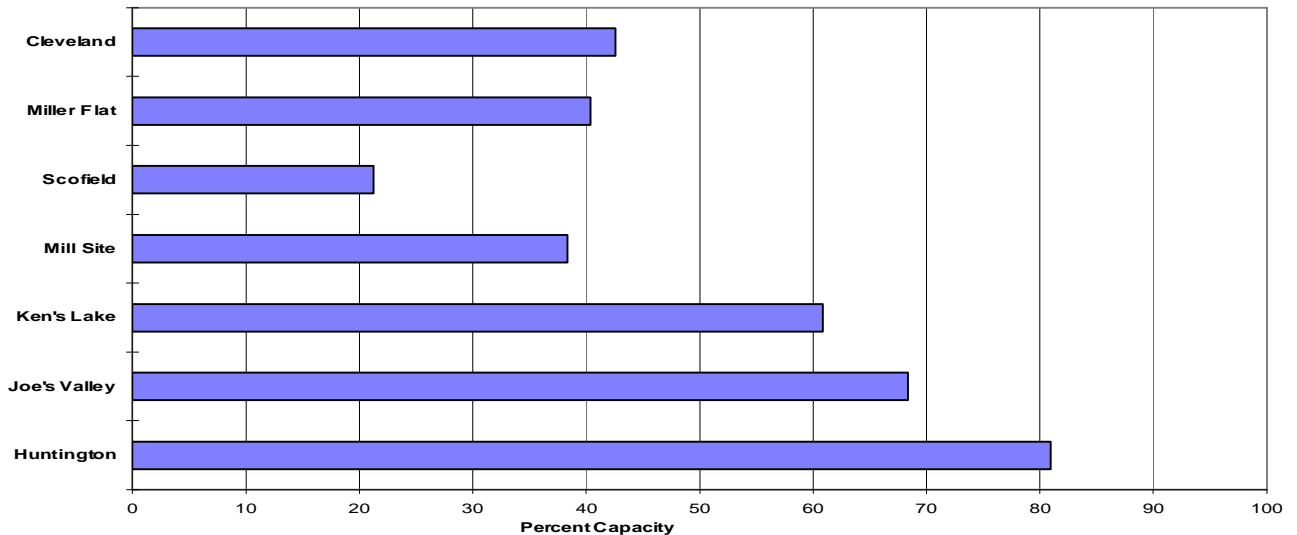
## Southeast Utah Precipitation

4/1/2008



## Reservoir Storage

4/1/2008



CARBON, EMERY, WAYNE, GRAND, & SAN JUAN Co.  
Streamflow Forecasts - April 1, 2008

Forecast Point	Forecast Period	<<==== Drier ==== Future Conditions ===== Wetter =====>>				30-Yr Avg. (1000AF)		
		90% (1000AF)	70% (1000AF)	Chance Of Exceeding * 50% (1000AF) (% AVG.)			30% (1000AF)	10% (1000AF)
Gooseberry Creek nr Scofield	APR-JUL	9.3	11.3	12.8	108	14.4	16.9	11.9
Price River nr Scofield Reservoir	APR-JUL	35	44	50	111	57	68	45
White River blw Tabbyune Creek	APR-JUL	13.9	16.9	19.0	110	21	25	17.3
Green River at Green River, UT (2)	APR-JUL	2090	2750	3200	101	3650	4310	3170
Huntington Ck Inflow to Electric Lk	APR-JUL	11.4	13.7	15.5	99	17.4	20	15.7
Huntington Ck nr Huntington (2)	APR-JUL	33	41	48	98	55	66	49
Joe's Valley Reservoir Inflow	APR-JUL	39	49	57	98	65	78	58
Ferron Ck (Upper Station) nr Ferron	APR-JUL	30	36	40	103	44	51	39
Colorado River nr Cisco (2)	APR-JUL	5010	5900	6500	140	7100	7990	4650
Mill Creek at Sheley Tunnel nr Moab	APR-JUL	3.10	4.10	4.80	96	5.60	7.00	5.00
Muddy Creek nr Emery	APR-JUL	13.4	17.2	20	101	23	28	19.9
South Ck ab Lloyd's Res nr Monticell	MAR-JUL	1.23	1.81	2.30	167	2.90	3.90	1.38
	APR-JUL	1.17	1.73	2.20	164	2.80	3.70	1.34
San Juan River near Bluff (2)	APR-JUL	1410	1710	1910	155	2110	2410	1230

CARBON, EMERY, WAYNE, GRAND, & SAN JUAN Co.  
Reservoir Storage (1000 AF) - End of March

CARBON, EMERY, WAYNE, GRAND, & SAN JUAN Co.  
Watershed Snowpack Analysis - April 1, 2008

Reservoir	Usable Capacity	*** Usable Storage ***			Watershed	Number of Data Sites	This Year as % of	
		This Year	Last Year	Avg			Last Yr	Average
HUNTINGTON NORTH	4.2	3.4	0.6	3.9	PRICE RIVER	3	295	111
JOE'S VALLEY	61.6	42.1	47.2	41.4	SAN RAFAEL RIVER	3	237	94
KEN'S LAKE	2.3	1.4	2.1	1.4	MUDDY CREEK	1	410	110
MILL SITE	16.7	6.4	13.5	86.2	FREMONT RIVER	3	155	87
SCOFIELD	65.8	14.0	41.1	34.7	LASAL MOUNTAINS	1	260	83
					BLUE MOUNTAINS	1	7700	170
					WILLOW CREEK	1	1771	149
					CARBON, EMERY, WAYNE, GRA	13	294	106

\* 90%, 70%, 50%, 30%, and 10% chances of exceeding are the probabilities that the actual volume will exceed the volumes in the table.

The average is computed for the 1971-2000 base period.

- (1) - The values listed under the 10% and 90% Chance of Exceeding are actually 5% and 95% exceedance levels.
- (2) - The value is natural volume - actual volume may be affected by upstream water management.